

## About the Editor and Illustrator



### Melinda Hinch, M.C.I.Sc., M.Ed., Reg. CASLPO,

is a Speech-Language Pathologist with great interest in the oral and written language development of preschool and school-age children. She is employed by the Greater Essex County District School Board. In her private practice, Melinda offers speech and language camps to children with autism spectrum disorder, learning disabilities and hearing impairment. She also assisted in the development of "Lucky's Journey - A colouring book for children experiencing the death of a loved one". Melinda resides in Windsor, Ontario with her husband, Andy, and her three children, Madeline, Ella, and Mason.



### Dennis K. Smith

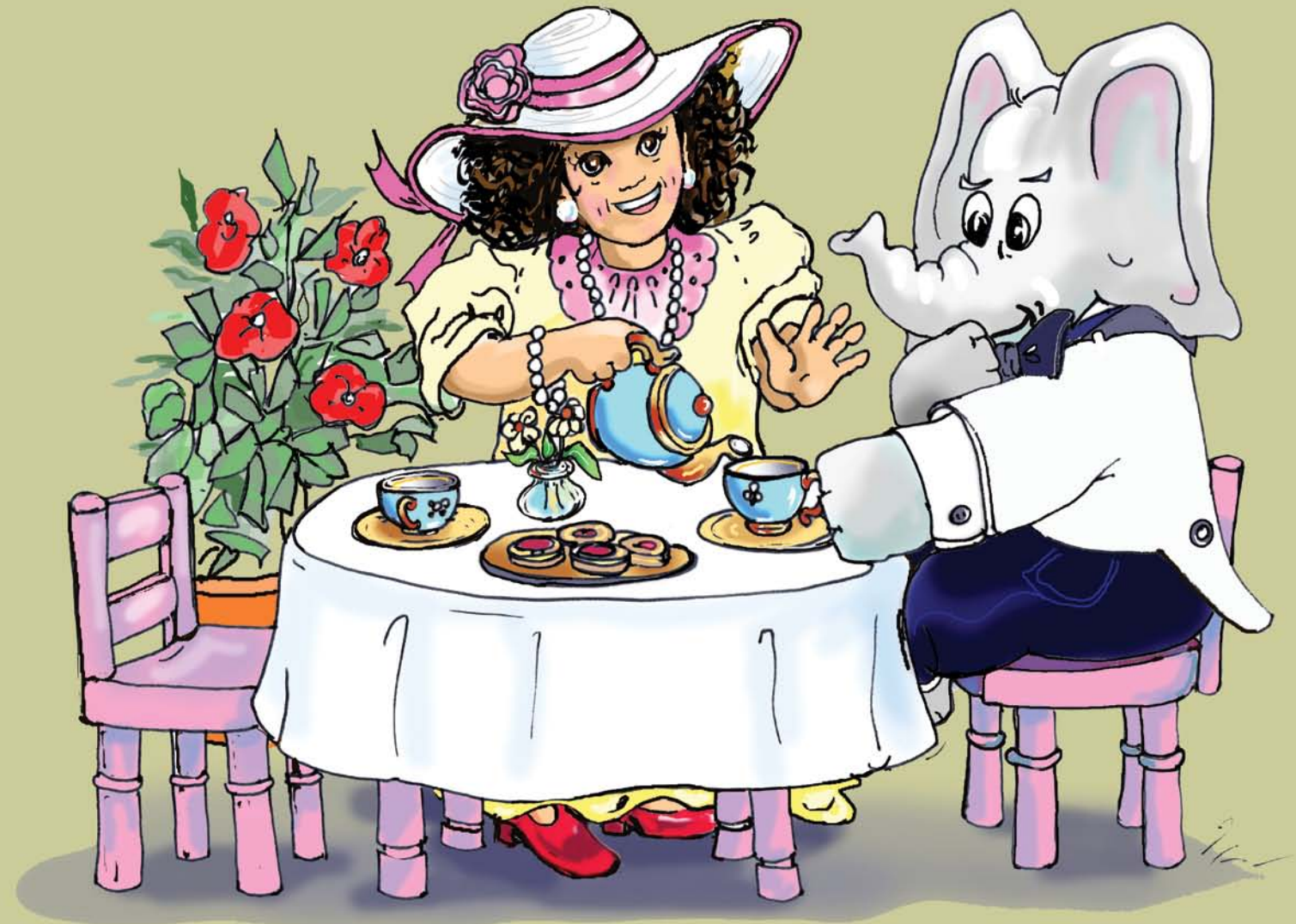
Canadian Artist Dennis K. Smith's distinctive artistic expressions, results in works that come alive through the use of rhythmic brush work, choreographed passages of colour and strong contrast. His palette consist mainly earth tones (Tertiary Colors, a mixture of primary and secondary colours) accented with bold clean vibrant secondary and primary color for strength and visual excitement. Yet there is honesty, simplicity and serenity that cause one to stop and take time and react with the painting and its message. Smith gives credence to the fact that creativity will change that which seemed ordinary and common place, into great works of art.

He has exhibited in juried shows, group and solo exhibitions. His lino prints were exhibited and sold in the Canada - Japan Exchange Print Exhibition held at the Chiba Shimin Gallery Image in Japan. In 2010 four of his works, were on display at the Royal Canadian

Museum as part of the "From the Soul" exhibition.

Having worked for Chrysler Canada for thirty four and half years, Smith now retired, teaches art full time in his studio. He enjoys the encouraging and motivating fellow artists to be true to their vision; honest in their artist expressions and above all allow their works to identify who they are.

# The Journey Continues... Ella Finds Lucky



**A child's story that explores feelings after  
the death of a loved one.**

A project of the  
Canadian Mental Health Association, Windsor-Essex County Branch

With support from



Ontario Trillium Foundation  
Fondation Trillium de l'Ontario

Illustrations: Dennis Smith

Editor: Melinda Hinch

# The Journey Continues.... Ella Finds Lucky

A child's story that explores feelings after the death of a loved one.

A project of the  
Canadian Mental Health Association  
Windsor Essex County Branch



With support from



Ontario Trillium Foundation  
Fondation Trillium de l'Ontario

*Illustrations by*  
Dennis Smith

*Edited by*  
Melinda Hinch, M.Cl.Sc., M.Ed., Reg. CASLPO  
Speech Language Pathologist

ISBN 978-0-97847825-4

Copyright © 2010 Canadian Mental Health Association,  
Windsor-Essex County Branch (CMHA-WECB)

Published by CMHA-WECB  
1400 Windsor Avenue  
Windsor, ON N8X 3L9  
[www.cmha-weceb.on.ca](http://www.cmha-weceb.on.ca)

"The Journey Continues, Ella Finds Lucky"  
A child's story that explores feelings after the death of a loved one.

CMHA acknowledges the following "The Journey Continues..." team:  
Nneka Allen, Coordinator  
Margaret Muzyka, MSW, Grief Therapist, Story Developer  
Patricia Thomas, Coordinator

Printed by:  
DigiPrint  
2485 McDougall Ave.  
Windsor, ON N8X 3N9

Canadian Mental Health Association, Windsor-Essex County Branch

## **Vision**

### ***Mentally Healthy People in a Healthy Society***

The mission of CMHA-WECB is to enhance and promote the mental health of all persons and support the resilience and recovery of people experiencing mental illness in our community through education, prevention, advocacy and services.

To make a donation to our agency visit our website at  
[www.cmha-weceb.on.ca](http://www.cmha-weceb.on.ca)